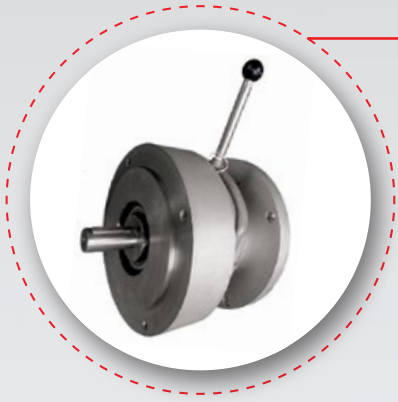


Electromagnetic Brakes and Clutches





358 Series Double Flange Motor Brake

- Spring Engaged / Electrically Released for Safety
- NEMA 56 C through NEMA 364 TC frame
- IEC/Metric 56 through 200 frame
- IP65 coupler housing
- UL, cUL, CE

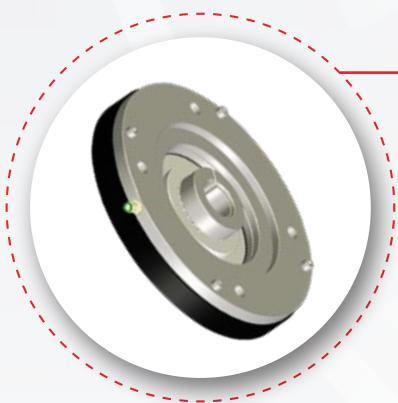
Motor Hp/kW	NEMA/IEC	EMTorq Model Size
.75/.55	56C/63	358.06
1/0.75	56C/71	358.08
1.5/1.1	145TC/80	358.10
2/1.5	145TC/90	358.11
3/2.2	184TC/100	358.12
5/4	184TC/112	358.12
7.5/5.5	215TC/132	358.14
10/7.5	215TC/160	358.14
15/11.2	256TC/160	358.16
20/15	256TC/160	358.16
25/18.6	286TC/180	358.20
30/22.4	286TC/180	358.23
40/30	326TC/200	358.25
50/37.3	326TC/200	358.25
60/44.7	365TC/225	358.31



450/458 Series Single Flange Motor Brake

- Spring Engaged / Electrically Released for Safety
- NEMA 56 C through NEMA 286 TC frame
- IEC/Metric 56 through 200 frame
- UP to IP65 Housing Protection
- UL, cUL, CE

Motor Hp/kW	NEMA/IEC	EMTorq Model Size
.75/.55	56C/63	450/458.06
1/0.75	56C/71	450/458.08
1.5/1.1	145TC/80	450/458.10
2/1.5	145TC/90	450/458.10
3/2.2	184TC/100	450/458.12
5/4	184TC/112	450/458.12
7.5/5.5	215TC/132	450/458.14
10/7.5	215TC/160	450/458.16
15/11.2	256TC/160	450/458.16
20/15	256TC/160	450/458.18
25/18.6	286TC/180	450/458.20
30/22.4	286TC/180	450/458.20



UTSB™ - Ultra-Thin Servo Brake™

- Slim zero backlash design - no bearings
- Spring Engaged / Electrically Released for Safety
- EZ mount to motor and gearbox
- Achieves EN ISO 13849 for redundant braking when used in combination with built-in servomotor brake
- UL, cUL, CE

Motor AK [mm]	Motor AJ [mm]	Axial Length [mm]
80	100	28.5
95	115	28.5
11	130	28.5
130	165	33.7
180	215	33.7



800 Series Clutch-Brake Module

- Electrically engaged with fast response and no overlap
- NEMA 56 C through NEMA 215 TC frame
- IEC/Metric 63 through 100 frame
- Foot mounting available
- IP 44 housing
- UL, cUL, CE

Motor Hp/kW	NEMA/IEC	EMTorq Model Size
.75/.55	56C/71	800.06
1/0.75	56C/80	800.08
1.5/1.1	145TC/90	800.10
2/1.5	145TC/90	800.10
3/2.2	184TC/100	800.12
5/4	215TC/112	800.16
7.5/5.5	215TC/132	800.16

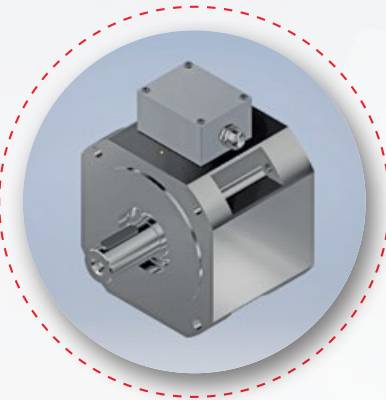


105 and 115 Series Clutches and Brakes

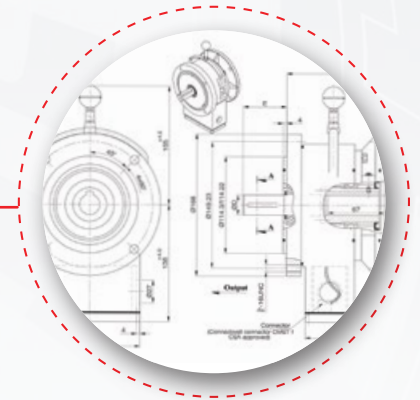
- Electrically engaged with fast response
- Inch and metric bores up to 5 inches
- Zero backlash
- Custom form-fit-function designs
- UL, cUL, CE

Torque [Nm/lbft]	Max. Bore [mm/inch]	EMTorq Model Size
7.5/5.5	20/0.75	105/115.06
15/11	25/1	105/115.08
30/22	30/1.125	105/115.10
60/44	40/1.5	105/115.12
120/88	50/1.75	105/115.16
240/177	60/2.25	105/115.20
480/354	60/2.25	105/115.25

NEW, Spring Engaged High Performance Servo Brake 6 to 160 Nm.



Custom Designs



OPTIONAL DESIGN FEATURES

Stainless
Marine Duty
Low Decibel
Eddy Current

Integrated Assembly
Custom Mounting
Rectifier Controls

Manual Release
Fail Safe
Washdown

Zero Backlash
Low Inertia
Frameless

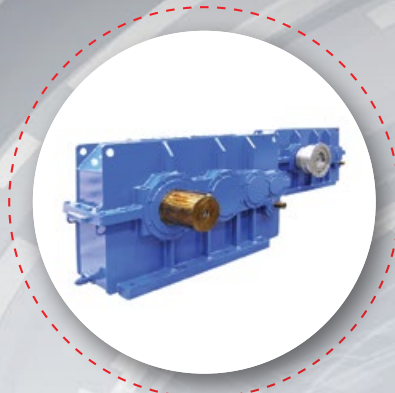
In-Stock Product, Repair and Retrofit Solutions for Industrial Power Transmission

TORQUE TECHNOLOGIES products and services.



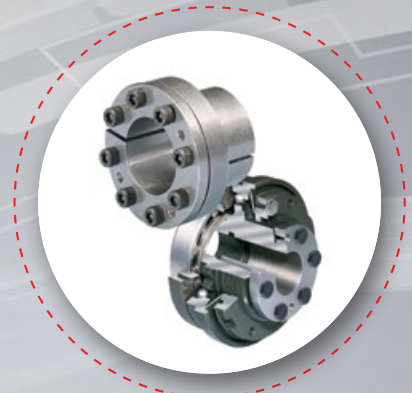
GOIZPER
CLUTCH-BRAKES
CAM AND SERVO
INDEXERS

GOIZPER
YOUR PARTNER
IN POWER TRANSMISSION



GUIBE
CUSTOM
GEARBOXES

GUIBE



FORTE
LOCK RINGS AND
TORQUE LIMITING
CLUTCHES

FORTE



Responsive Customer Service + In Stock Product

- Broad range of inventory for customer support.
- Computerized application assistance for accurate product selection.
- Florida-based repair at our facility or an authorized Torque Technologies service/retrofitter.
- On-site service available.

EMTorq
A Division of Torque Technologies



Connect with our sales team!
1-800-813-0844 | sales@torq-tech.com

Headquartered in Bradenton, Florida with sales offices located across the USA.